

Analysis of Spatial-Temporal Variations of Surface Water Quality in the Southern Province of Vietnamese Mekong Delta Using Multivariate Statistical Analysis

Tran Thi Kim Hong¹, Le Hoang Viet¹, Nguyen Thanh Giao^{1*}

¹ College of Environment and Natural Resources, Can Tho University, Campus II, 3/2 Street, Xuan Khanh ward, Ninh Kieu district, Can Tho City 900000, Vietnam

* Corresponding author's e-mail: ntgiao@ctu.edu.vn

ABSTRACT

The study aimed to assess the variation in surface water quality in the Tien Giang province, Vietnam, and at the same time identify the main sources of water pollution. The surface water quality samples were collected at 34 locations (NM01-NM34) with 17 surface water quality indicators in March, June, September and November in canals and rivers in the Tien Giang province. Multivariate statistical analysis methods, including principal component analysis (PCA), cluster analysis (CA) and numerical discriminant analysis (DA), were used to analyze the variability and key indicators affecting the effect of multivariate statistical analysis. The analysis results show that the surface water quality in the study area is contaminated with organic (low DO, high BOD and COD) and nutrients ($\text{NH}_4^+\text{-N}$, $\text{NO}_2^-\text{-N}$, $\text{PO}_4^{3-}\text{-P}$ and TP), salinity (high Cl⁻). The PCA results showed that 14/17 surface water environmental parameters to be monitored are pH, temperature, TSS, BOD, COD, $\text{NH}_4^+\text{-N}$, $\text{NO}_2^-\text{-N}$, $\text{PO}_4^{3-}\text{-P}$, TP, SO_4^{2-} , Cl⁻, coliform and Fe. The PCA analysis showed that PC1-PC4 accounted for 79.70% of the variation in surface water quality in the study area. Potential surface water polluting sources include hydrological regime, domestic waste, agricultural production, industrial production activities. The CA results showed that 34 monitoring locations can be reduced to 27 locations, with a frequency of 4 times/year to ensure surface water quality representativeness. The DA indicated that the indicators of EC, SO_4^{2-} and Cl⁻ made the difference of the surface water quality between the wet and dry seasons. The current results provide important information on the current state of water quality for different uses and contribute to the improvement of the surface water quality monitoring system in the Tien Giang province.

Keywords: surface water, organic pollution, multivariate statistical analysis, Tien Giang province.

INTRODUCTION

Surface water pollution with toxic chemicals as well as eutrophication in rivers and lakes with sudden increase in nutrients are environmental problems that have received worldwide attention (Iscen et al., 2008). Natural factors, such as discharge, rainfall, soil erosion, biochemical characteristics of watersheds and human factors, including urbanization, industrial and agricultural activities, can all affect the surface water quality (Hajigholizadeh & Melesse, 2017). Agricultural, industrial and urban activities are considered as the main sources of pollution in aquatic ecosystems, with potential impacts on the ecological

environment, human health and economic development (Mustapha & Abdu, 2012; Zeinalzadeh & Rezaei, 2017; Yang et al., 2020). The pollutants in water can cause acute or chronic poisoning of humans through the use of unsafe drinking and domestic water sources (Si et al., 2015). Respiratory diseases, gastritis, diarrhea, vomiting, neurological and cardiovascular disorders, as well as skin and kidney problems are all associated with the use of contaminated water (Haseena et al., 2017). Besides, nitrogenous chemicals are the cause of cancer and baby blues syndrome (Currie et al., 2013). In addition, a large number of bacteria harmful to human health were found in contaminated water (Haseena et al., 2017).

Along with the attention to water quality, the methods of assessing water quality are also more and more diverse. Currently, assessment methods such as index method (Son et al., 2019; Thuy et al., 2021), modeling technique (Uyen et al., 2014; Tuan et al., 2019) and multivariate statistics (Mustapha et al., 2013; Dabgerwal & Tripathi, 2016; Wang et al., 2013) are commonly applied. Principal component analysis (PCA), cluster analysis (CA), and discriminant analysis (DA) are widely used multivariate statistical methods. PCA is used to identify the potential factors or sources of pollution affecting the water quality in the study area, optimizing future monitoring programs by reducing the number of monitored parameters (Tanriverdi et al., 2010). The CA analysis aims to find patterns and variants with similar biophysical and biochemical properties, optimizing future monitoring program by reducing monitoring frequency and number of monitored locations. DA was performed to differentiate variables between two or more groups, introducing important variables that lead to differences between water quality groups (Koklu et al., 2010; Schaefer & Einax, 2010). All three methods mentioned above have the ultimate purpose of optimizing the water quality monitoring network system, saving costs and time.

The Tien Giang province is a major center of rice production, aquaculture and seafood processing, making a great contribution to the country’s agricultural exports, etc., towards the goal of becoming a province with a dynamic economy.

With the acceleration of the process of industrialization and modernization of the province, the problem of surface water pollution is inevitable. Therefore, a comprehensive water quality assessment, understanding the pollution status, and identifying the main pollution sources are urgent to protect water resources and control water pollution (Yang et al., 2020). Therefore, the research on applying multivariable statistics in assessing surface water quality in the Tien Giang province was carried out, through 17 basic water quality indicators of water samples in the province. The results can be used to establish a new, more suitable monitoring network, to support water quality management, control pollution sources and protect water resources in the study area.

MATERIALS AND METHODS

Water sampling and analysis

The water samples were collected at 34 locations (NM01-NM34) affected by different impacts, such as residential areas, waterway traffic, seafood processing, livestock and coastal areas. There are 21 monitoring locations affected by daily activities in residential areas, including NM01, NM02, NM05, NM07, NM08, NM09, NM10, NM11, NM12, NM13, NM14, NM15, NM16, NM21, NM22, NM23, NM24, NM25, NM26, NM27, and NM28; the impact due to

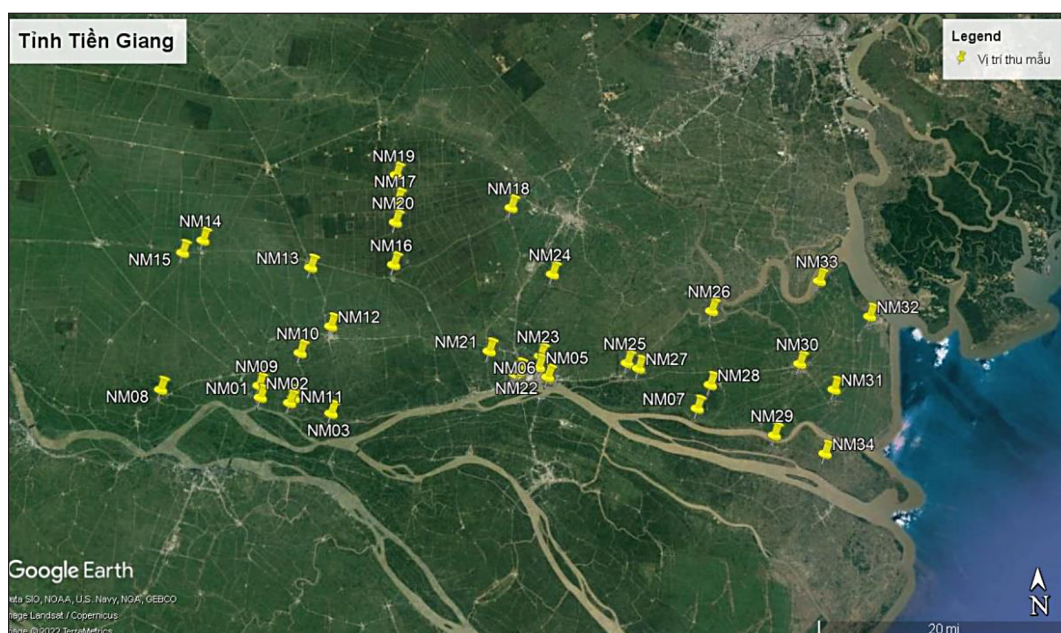


Figure 1. Map of the sampling locations

river transportation (NM03); the areas affected by fisheries (NM04 and NM06); the canal route belongs to the two provinces of Tien Giang and Long An (NM17-NM19) and the area adjacent to the sea (NM29-NM34) (Figure 1). The surface water samples were collected with a frequency of 4 times/year, corresponding to March, June, September and November, according to TCVN 6663-1: 2011 (ISO 5667-1:2006). Assessment of surface water quality using 17 physical, chemical and biological parameters, including pH, temperature, electrical conductivity (EC), total suspended solids (TSS), organic matters (DO, BOD, COD), nutrients (NH_4^+ -N, NO_2^- -N, NO_3^- -N, TN, PO_4^{3-} -P, TP), SO_4^{2-} , Cl⁻, coliform and Fe. The parameters such as pH, temperature, EC, DO were measured directly in the field by CyberScan PCD 650 EUTECH. The remaining parameters, including TSS, BOD, COD, NH_4^+ -N, NO_2^- -N, NO_3^- -N, TN, PO_4^{3-} -P, TP, SO_4^{2-} , Cl⁻, coliform and Fe were analyzed at the legal laboratory according to standard methods (APHA, 1998).

Data analysis

The surface water quality is assessed using the National Technical Regulation on Surface Water Quality, column A1 (QCVN 08-MT:2015/BTNMT, column A1). The seasonal and spatial variations in the surface water quality were assessed using Independent Samples T-Test, numerical

discriminant analysis (DA) using IBM SPSS 20.0 Windows software (IBM, USA), and cluster analysis (CA) using Primer 5.2 software for Windows (PRIMER-E Ltd, Plymouth, UK). The key parameters affecting the surface water quality were analyzed by principal component analysis (PCA) using Primer 5.2 software for Windows (PRIMER-E Ltd, Plymouth, UK).

RESULTS AND DISCUSSION

Summary of surface water quality in the study area

From the surface water environment parameter data at 34 monitoring locations obtained with a frequency of 4 times/year, descriptive statistics such as mean, standard deviation, lowest and highest values of 17 parameters are presented in Table 1.

Table 1 shows that the average values of pH, NO_3^- -N, Fe and coliform fluctuating between monitoring sites are 7.24 ± 0.71 , 0.37 ± 0.14 mg/L, 0.03 ± 0.01 mg/L and 1711.32 ± 940.89 MPN/100 mL, respectively, within the allowable limits of QCVN 08-MT:2015/BTNMT (column A1). Iron (Fe) appeared only at position NM04 with a concentration (0.915 ± 0.3 mg/L) exceeding QCVN 08-MT:2015/BTNMT (column A1) by 1.83 times. Water temperature fluctuated slightly between monitoring locations, reaching an average of 30.20 ± 1.68 °C, suitable for the growth

Table 1. Summary of surface water quality parameters in the study area

Parameter	Unit	Mean \pm SD	Min	Max	QCVN 08-MT:2015/BTNMT, A1
pH	-	7.24 \pm 0.71	5.96 \pm 1.17	8.06 \pm 0.90	6-8.5
Temp.	°C	30.20 \pm 1.68	28.48 \pm 0.77	32.53 \pm 4.10	-
EC	$\mu\text{S}/\text{cm}$	3708.39 \pm 7819.45	311.30 \pm 236.32	22147.25 \pm 24639.91	-
TSS	mg/L	91.92\pm43.62	39.25 \pm 5.56	187.25 \pm 71.96	20
DO	mg/L	3.92\pm1.4	2.32 \pm 0.26	5.45 \pm 1.96	\geq 6
BOD ₅	mg/L	8.45\pm2.57	5 \pm 1.41	14.25 \pm 2.75	4
COD	mg/L	16.11\pm4.11	12.25 \pm 2.63	26.25 \pm 6.70	10
NH_4^+ -N	mg/L	0.34\pm0.17	0.14 \pm 0.04	0.84 \pm 0.19	0.3
NO_2^- -N	mg/L	0.096\pm0.13	0.022 \pm 0.00	0.643 \pm 0.09	0.05
NO_3^- -N	mg/L	0.37 \pm 0.14	0.09 \pm 0.04	0.67 \pm 0.09	2
TN	mg/L	2.53 \pm 2.92	1.26 \pm 0.45	8.38 \pm 11.05	-
SO_4^{2-}	mg/L	160.62 \pm 223.00	33.23 \pm 7.31	655.33 \pm 689.45	-
PO_4^{3-} -P	mg/L	0.116\pm0.09	0.038 \pm 0.04	0.455 \pm 0.26	0.1
TP	mg/L	0.17 \pm 0.14	0.07 \pm 0.05	0.738 \pm 0.35	-
Cl ⁻	mg/L	1134.4\pm2315.17	93.55 \pm 42.64	6711.83 \pm 7279.44	250
Coliform	MNP/100 mL	1711.32 \pm 940.89	752.50 \pm 328.37	4300 \pm 962.64	2500
Fe	mg/L	0.03 \pm 0.01	0	0.915 \pm 0.3	0.5

of aquatic species. The result is consistent with temperature changes in the tropics (Chounlamany et al., 2017). Electrical conductivity (EC) fluctuated quite substantially between monitoring locations with a high average value of about $3708.39 \pm 7819.45 \mu\text{S}/\text{cm}$, possibly due to the impact of a large amount of wastewater containing high dissolved substances. At the same time, the high EC is due to the high presence of cationic soluble salts such as calcium, magnesium and sulfate (Sarda & Sadgir, 2015). High concentration EC was found at the locations adjacent to the coastal area such as NM29, NM30, NM31, NM32, NM33, NM34 and some locations affected by residential and aquatic wastewater such as NM04, NM05 and NM06. The water quality indicators such as TSS, BOD, COD, $\text{NH}_4^+\text{-N}$, $\text{NO}_2^-\text{-N}$, $\text{PO}_4^{3-}\text{-P}$ and Cl^- had relatively large differences between the minimum and maximum values, and almost all exceeded the allowable thresholds of QCVN 08-MT:2015/BTNMT (column A1). DO in water was low ($3.92 \pm 1.4 \text{ mg}/\text{L}$), consistent with the high BOD, COD and TSS in surface water. The results showed that the surface water quality in the study area is contaminated with organic matters, nutrients and salinity. The results also showed that the high concentrations of $\text{NH}_4^+\text{-N}$, $\text{NO}_2^-\text{-N}$, and $\text{PO}_4^{3-}\text{-P}$ in water resulted in relatively high concentrations of TN and TP (Table 1).

Table 2 presents the variation of surface water quality by month. Surface water indicators such as pH, EC, $\text{NO}_3^-\text{-N}$, SO_4^{2-} tended to decrease over time and in March and June, the values of these indicators tended to be higher than in September and November. Meanwhile, the Fe concentration fluctuated slightly over the months of observation and peaked in November. The remaining indicators fluctuated quite complicatedly, with differences between monitoring periods during the year. However, the concentrations of DO, $\text{NH}_4^+\text{-N}$, $\text{NO}_2^-\text{-N}$, $\text{PO}_4^{3-}\text{-P}$, TP and Fe were not statistically significant between the four monitoring periods. The pH and COD values between March and other months (June, September, November) were significantly different ($p < 0.05$). The temperature value between June and September has no statistical significance ($p > 0.05$) and is statistically significant with March and November ($p < 0.05$), while the temperature differences between March, September and November were not statistically significant ($p > 0.05$). The values of EC and Cl^- between the months (March, June) were significantly different from those of the months (September, November) ($p < 0.05$). The TSS concentration between the months (March, June, November) was statistically significantly different from the months (June, September, November) ($p < 0.05$). Regarding the BOD concentration, two pairs of statistically significant differences

Table 2. Variation of surface water quality by months

Parameter	March	June	September	November	QCVN 08-MT:2015/BTNMT, A1
pH	7.56 ± 0.39^a	7.3 ± 0.60^b	7.11 ± 0.62^b	7.00 ± 0.99^b	6-8.5
Temp.	29.83 ± 2.05^b	31.23 ± 1.51^a	30.59 ± 1.10^{ab}	29.16 ± 1.15^b	-
EC	8492.59 ± 10371.85^a	5295.88 ± 9625.69^a	763.24 ± 1505.19^b	281.86 ± 6531^b	-
TSS	105.26 ± 55.01^a	91.12 ± 50.04^{ab}	79.53 ± 33.97^b	91.76 ± 27.53^{ab}	20
DO	3.89 ± 1.29^a	4.04 ± 1.65^a	3.89 ± 1.23^a	3.86 ± 1.45^a	≥ 6
BOD	7.65 ± 2.23^b	9.15 ± 3.04^a	8.53 ± 2.74^{ab}	8.47 ± 2.02^{ab}	4
COD	14.21 ± 3.40^b	17.21 ± 5.15^a	16.29 ± 3.74^a	16.74 ± 3.45^a	10
$\text{NH}_4^+\text{-N}$	0.33 ± 0.13^a	0.37 ± 0.19^a	0.35 ± 0.17^a	0.33 ± 0.18^a	0.3
$\text{NO}_2^-\text{-N}$	0.094 ± 0.15^a	0.094 ± 0.13^a	0.093 ± 0.13^a	0.104 ± 0.11^a	0.05
$\text{NO}_3^-\text{-N}$	0.41 ± 0.16^a	0.39 ± 0.15^a	0.37 ± 0.13^{ab}	0.32 ± 0.11^b	2
TN	3.37 ± 4.94^a	3.26 ± 2.37^a	1.30 ± 0.71^b	2.18 ± 1.25^a	-
SO_4^{2-}	295.01 ± 299.37^a	218.68 ± 246.63^a	83.34 ± 86.57^b	45.45 ± 59.98^c	-
$\text{PO}_4^{3-}\text{-P}$	0.110 ± 0.15^a	0.122 ± 0.08^a	0.119 ± 0.04^a	0.114 ± 0.07^a	0.1
TP	0.155 ± 0.20^a	0.185 ± 0.14^a	0.183 ± 0.06^a	0.157 ± 0.09^a	-
Cl^-	2597.07 ± 3121.17^a	1463.17 ± 2770.45^a	174.46 ± 361.62^b	302.89 ± 634.14^b	250
Coliform	1235.88 ± 1015.53^c	1663.82 ± 1013.99^{bc}	1751.47 ± 824.02^b	2194.12 ± 637.20^a	2500
Fe	0.02 ± 0.13^a	0.02 ± 0.14^a	0.02 ± 0.13^a	0.04 ± 0.03^a	0.5

Note: Values in the same row with the same letter (a, b, c) are not significantly different at $\alpha = 5\%$ and vice versa.

appeared between (June, September, November) and the months (March, September, November) ($p < 0.05$). The nitrate concentration in the middle of the months (March, June, September) was significantly different from the months (September, November) ($p < 0.05$). Total N concentrations in the months (March, June, November) are statistically different from September at 5% significance level. The concentration of SO_4^{2-} has a statistical difference between the months (March, June, September and November) at 5% significance level. In general, most of the surface water quality parameters were temporarily fluctuated.

Determining key parameters influencing the surface water quality

The results of principal component analysis of surface water quality in the study area are presented in Table 3. The first group of water quality indicators (PC1), which contributes 31.20% of the total data variables, was determined including TSS, BOD, COD, $\text{NH}_4^+\text{-N}$, $\text{NO}_2^-\text{-N}$ and coliform, which were positively correlated with each other. These can be organic matters, nutrients and microorganisms affected by the decomposition of organic compounds originating from domestic, aquaculture and industrial activities as well as

human and animal feces that contaminate water sources. In addition, the presence of TSS in water usually originates in alluvium of flows, solids from riverbanks and canals and is influenced by the movement of water transport and aquatic organisms (Nhan, 2013). The second factor (PC2) accounted for 23.70% of the variability of the original data set consisting of EC, SO_4^{2-} and Cl^- which were positively correlated with each other as well as negatively correlated with $\text{PO}_4^{3-}\text{-P}$ and TP. The origin of $\text{PO}_4^{3-}\text{-P}$ formation in water can come from the wastewater containing detergents, domestic wastewater, the higher the $\text{PO}_4^{3-}\text{-P}$ concentration, the greater the TP formed in the water. The concentration of Cl^- appeared to represent a source of saline water, along with receiving a large amount of domestic and industrial wastewater. PC3, in addition to the criteria appearing in PC2, also has the presence of the pH and Fe parameters, explaining 16.30% of the variation in surface water quality. Finally, PC4 contributed 8.40% of the total initial data with the parameters such as pH, temperature and Fe. As a result, the parameters of pH, temperature, EC, TSS, BOD, COD, $\text{NH}_4^+\text{-N}$, $\text{NO}_2^-\text{-N}$, SO_4^{2-} , $\text{PO}_4^{3-}\text{-P}$, TP, Cl^- , coliform and Fe were the key water quality parameters influencing the surface water quality in the study area. The surface water quality impacting

Table 3. Key parameters influencing the surface water quality

Parameters	PC1	PC2	PC3	PC4
pH	0.023	-0.113	-0.324	-0.577
Temp.	0.148	0.285	0.050	0.359
EC	-0.022	0.355	-0.409	0.020
TSS	0.329	-0.113	-0.071	-0.234
DO	-0.285	-0.094	-0.202	-0.090
BOD	0.397	0.101	-0.126	-0.087
COD	0.392	0.093	-0.149	-0.080
$\text{NH}_4^+\text{-N}$	0.348	-0.027	0.035	0.129
$\text{NO}_2^-\text{-N}$	0.308	-0.021	0.121	0.183
$\text{NO}_3^-\text{-N}$	0.278	-0.269	-0.053	-0.133
TN	0.181	0.151	-0.118	-0.274
SO_4^{2-}	-0.061	0.366	-0.312	0.227
$\text{PO}_4^{3-}\text{-P}$	0.013	-0.390	-0.326	0.173
TP	-0.004	-0.384	-0.334	0.214
Cl^-	-0.025	0.348	-0.412	0.003
Coliform	0.382	-0.003	0.062	0.205
Fe	-0.006	-0.297	-0.346	0.385
Eigenvalues	5.31	4.03	2.77	1.42
%Variation	31.20	23.70	16.30	8.40
Cum.%Variation	31.20	55.00	71.30	79.70

sources could possibly stem from hydrological regime, domestic waste, agricultural production, industrial production activities.

Spatial analysis of surface water quality

The results of cluster analysis showed that the surface water quality at 34 initial monitoring locations formed 6 clusters (Figure 2). Clusters I and III, each representing a separate location, corresponding to NM08 and NM04, should be kept for monitoring. Cluster I (NM08) was the least polluted location with most water quality indicators being lower than those in the other clusters (Table 4). Cluster III (NM04) was the only location where Fe appeared in water and exceeded the allowable limit of QCVN 08-MT:2015/BTNMT, column A1 (0.5 mg/L). It was also the cluster with the highest concentration of PO_4^{3-} -P and TP among the six clusters. Because this is an area affected by the seafood processing wastewater, detergents are used during the stages of tool washing and factory cleaning. Clusters II and V each contained four monitoring sites with nearly identical water quality. Cluster II included NM29, NM32, NM33 and NM34 with the highest concentration of SO_4^{2-} and Cl⁻ in water, and this was also the cluster of locations bordering the sea, affected by seawater intrusion, causing high salinity in water. All the sites in this cluster are located in different areas; the locations should be kept for future monitoring. Cluster V gathers the locations of NM13, NM14, NM15, NM16, NM17, NM18, NM19, NM20, NM21, NM22, NM23, NM24, NM25, NM26, NM27, NM28, are influenced by many different sources such as residential areas, contiguous locations between provinces, and livestock activities. In Cluster VI, NM01 and NM02 belong to the Tien River area and are affected by residential areas, so one of these two locations can be eliminated. Through the CA analysis results, the 34 initially selected monitoring locations can be reduced to 27 locations, saving about 20.59% of monitoring costs but still ensuring the representativeness of the area and the source of impacts.

organic matters, nutrients and microorganisms in the water (Table 4). This result indicated that this is the cluster of with heaviest organic and micro-biological pollution. Cluster IV gathered 10 sites with similar surface water characteristics, namely NM03, NM05, NM06, NM07, NM22, NM23, NM25, NM27, NM30 and NM31 with relatively high EC and total N. For Cluster IV, one of the two locations NM05 and NM07 can be removed, because they are located on the Tien River and are subject to the same impact source. Finally, Cluster VI gathered many observation sites with similar physicochemical and biological properties in water, including NM01, NM02, NM09, NM10, NM11, NM12, NM17, NM18, NM19, NM20, NM21, NM24, NM26, NM28, are influenced by many different sources such as residential areas, contiguous locations between provinces, and livestock activities. In Cluster VI, NM01 and NM02 belong to the Tien River area and are affected by residential areas, so one of these two locations can be eliminated. Through the CA analysis results, the 34 initially selected monitoring locations can be reduced to 27 locations, saving about 20.59% of monitoring costs but still ensuring the representativeness of the area and the source of impacts.

The analysis results in Figure 3 show that the cluster analysis from 4 monitoring periods formed two clusters of surface water quality with Cluster I collected in March at the end of the dry season and June in the middle of the rainy season. Meanwhile, cluster II included the rainy months of September and November. However, November is the end of the rainy season, entering the dry

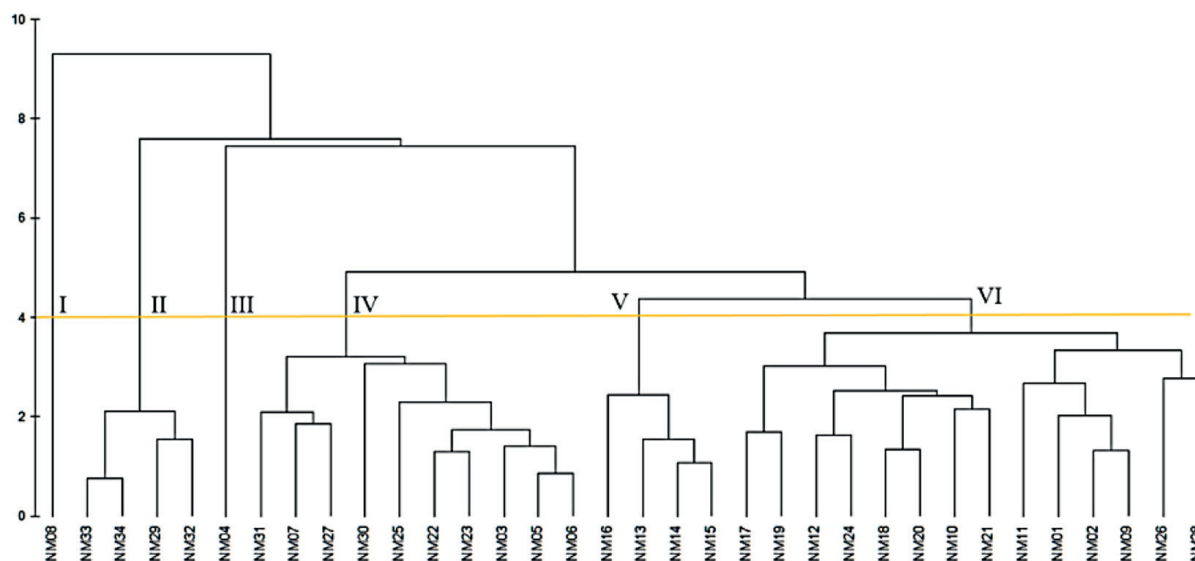


Figure 2. Spatial variation of surface water quality

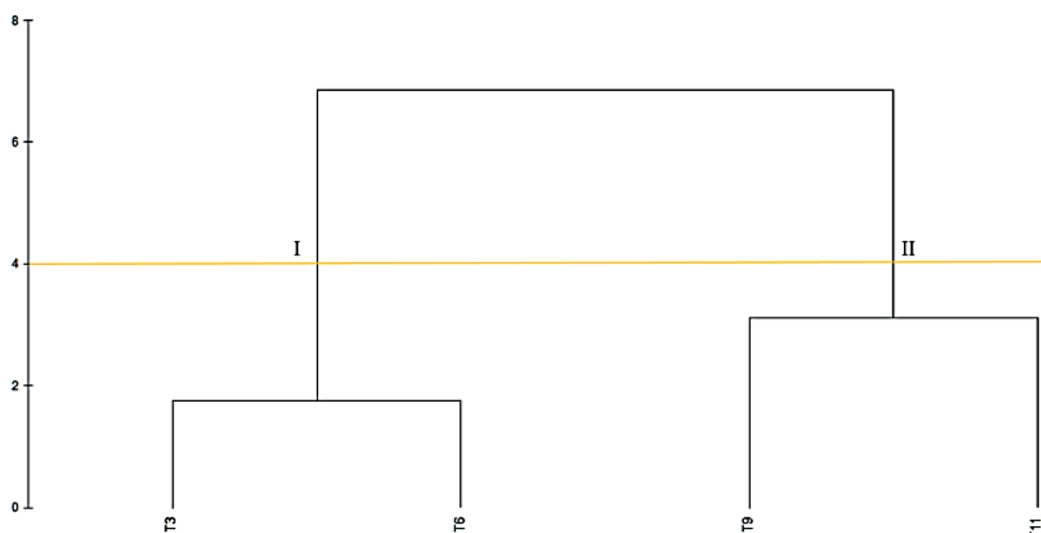


Figure 3. Temporal variation of surface water quality

Table 4. Mean values of water parameters in the identified clusters

Parameter	Spatial variation						Temporal variation	
	Cluster I	Cluster II	Cluster III	Cluster IV	Cluster V	Cluster VI	Cluster I	Cluster II
pH	7.39±0.29	7.21±0.77	7.53±0.28	7.53±0.18	7.14±0.1	7.05±0.61	7.43±0.18	7.06±0.08
Temp.	30.10±0.86	30.93±1.11	29.08±1.52	30.15±1.03	30.98±0.21	29.90±1.05	30.53±0.99	29.88±1.01
EC	311.30±236.32	15817.81±4262.41	2726.05±4803.79	4074.79±1985.81	633.83±215.94	1178.11±412.31	6894.24±2260.42	522.55±340.38
TSS	66.75±5.06	66.88±35.09	101.50±32.55	104.43±32.77	133.69±38.81	79.32±20.66	98.19±9.99	85.65±8.65
DO	4.57±1.15	4.23±1.10	5.19±0.69	4.20±0.82	2.91±0.74	3.79±1.04	3.97±0.11	3.88±0.02
BOD ₅	6.50±1.29	9.19±3.18	7.50±1.29	8.58±1.80	10.88±2.98	7.66±1.53	8.4±1.06	8.5±0.04
COD	13±2.94	17.25±4.63	15.75±2.87	16.38±3.09	19.56±4.99	14.86±2.07	15.71±2.12	16.52±0.32
N-NH ₄ ⁺	0.24±0.06	0.28±0.13	0.41±0.20	0.32±0.1	0.51±0.23	0.33±0.1	0.35±0.03	0.34±0.01
N-NO ₂ ⁻	0.066±0.01	0.05±0.03	0.031±0.01	0.06±0.05	0.40±0.17	0.05±0.04	0.094±0	0.099±0.01
N-NO ₃ ⁻	0.3±0.03	0.23±0.15	0.56±0.23	0.41±0.11	0.48±0.03	0.35±0.07	0.4±0.01	0.345±0.04
TN	1.95±1.05	2.91±1.39	1.69±0.17	3.02±2.22	2.37±0.44	2.21±1.32	3.315±008	1.74±0.62
SO ₄ ²⁻	33.23±7.31	513.22±110.61	129.27±134.95	156.33±75.71	88.93±17.06	94.76±21.68	256.85±53.97	64.4±26.79
P-PO ₄ ³⁻	0.143±0.02	0.07±0.03	0.455±0.26	0.11±0.02	0.12±0.03	0.11±0.05	0.116±0.01	0.117±0.00
TP	0.188±0.02	0.10±0.04	0.738±0.35	0.16±0.03	0.17±0.03	0.16±0.07	0.17±0.02	0.17±0.02
Cl ⁻	93.55±42.64	4880.81±1264.14	791.50±1350.05	1216.35±566.94	169.59±57.18	379.96±188.06	2030.12±801.79	238.68±90.81
Coliform	772.50±352.17	1621.25±370.41	1832.50±899.75	1508.50±563.56	3306.25±690.52	1484.64±530.43	1449.85±302.6	1972.8±313.00
Fe	0	0	0.915±0.3	0	0	0	0.77±0.06	1.06±0.42

season. Between the two clusters, the obvious difference can be seen to be dominated by EC, SO₄²⁻ and Cl⁻. EC, SO₄²⁻ and Cl⁻ concentrations in cluster I were higher than those of cluster II (Table 4). This was also confirmed by discriminant analysis. Therefore, the frequency of surface water monitoring should be carried out 4 times per year to clearly represent the temporal variations between the dry and rainy seasons.

CONCLUSIONS

The results show that surface water quality of the Tien Giang province in 2020 was polluted by

organic matters, nutrients and salinity since the parameters TSS, BOD, COD, NH₄⁺-N, NO₂⁻-N, PO₄³⁻-P, Cl⁻ exceeded the limits of QCVN 08-MT:2015/BTNMT (column A1). Four PCs explained 79.70% of the variation in surface water quality in the study area. The surface water quality impact sources could be possibly caused by hydrological regime, domestic waste, agricultural production, and industrial production activities. The PCA results 14 water quality indicators including pH, temperature, EC, BOD, COD, NH₄⁺-N, NO₂⁻-N, SO₄²⁻, PO₄³⁻-P, TP, Cl⁻, coliform and Fe should be monitored. The CA analysis results showed that it is possible to reduce the monitoring locations from 34 to 27,

while still ensuring the representativeness of the surface water quality monitoring. However, the monitoring frequency should still be maintained at 4 times per year to clearly show the variation of the surface water quality in the study area over time. The parameters of EC, SO_4^{2-} and Cl^- , played a significant role in discriminating the surface water quality following seasonal variations. The current results provide useful information for water use planning and the surface water quality monitoring in the study area.

Acknowledgements

The authors sincerely thank the Department of Natural Resources and Environment of Tien Giang province for providing monitoring data on surface water quality. The analysis and evaluation in this report represent the scientific opinion of the authors, and do not necessarily reflect the views of the data provider.

REFERENCES

1. American Public Health Association (APHA). 1998. Standard Methods for the Examination of Water and Wastewater. Washington DC, APHA/AWWA/WEF.
2. Chounlamany V., Tanchuling M. A., Inoue T. 2017. Spatial and temporal variation of water quality of a segment of Marikina River using multivariate statistical methods. *Water Science and Technology*, 76(6), 1510–1522.
3. Currie J. 2013. Something in the water: Contaminated drinking water and infant health. *BMJ (Clinical Research Ed.)*, 343. <https://doi.org/10.1136/bmj.d723>.
4. Dabgerwal D.K., Tripathi S.K. 2016. Assessment of surface water quality using hierarchical cluster analysis. *International Journal of Environment*, 5(1), 32–44.
5. Hajjholizadeh M., Melesse A.M. 2017. Assortment and spatiotemporal analysis of surface water quality using cluster and discriminant analyses. *Catena*, 151, 247–258.
6. Haseena M., Malik M.F., Javed A., Arshad S., Asif N., Zulfiqar S., Hanif J. 2017. Water pollution and human health. *Environmental Risk Assessment Remediat*, 1(3), 16-19.
7. Iscen C.F., Emiroglu Ö., Ilhan S., Arslan N., Yilmaz V., Ahiska S. 2008. Application of multivariate statistical techniques in the assessment of surface water quality in Uluabat Lake, Turkey. *Environmental Monitoring and Assessment*, 144(1–3), 269–276.
8. Koklu R., Sengorur B., Topal B. 2010. Water quality assessment using multivariate statistical methods—a case study: Melen river system (Turkey). *Water Resources Management*, 24(5), 959–978.
9. Mustapha A., Abdu A. 2012. Application of Principal Component Analysis & Multiple Regression Models in Surface Water Quality Assessment. *Journal of Environment and Earth Science*, 2(2), 16–23.
10. Mustapha A., Aris A.Z., Juahir H., Ramli M.F., Kura N.U. 2013. River water quality assessment using environmental techniques: Case study of Jakara River Basin. *Environmental Science and Pollution Research*, 20(8), 5630–5644.
11. Nhan T.T. 2013. Using the statistical analysis techniques to assess surface water quality: A case study in Tra Vinh province. *Tra Vinh University Journal of Science*, 11–18. (in Vietnam)
12. Sarda P., Sadgir P. 2015. Assessment of Multi Parameters of Water Quality in Surface Water Bodies—A Review. *International Journal for Research in Applied Science & Engineering Technology (IJRA-SET)*, 331–336.
13. Schaefer K., Einax J. W. 2010. Analytical and chemometric characterization of the Cruces River in South Chile. *Environmental Science and Pollution Research*, 17(1), 115–123.
14. Si W., Liu J., Cai L., Jiang H., Zheng C., He X., Wang J., Zhang X. 2015. Health risks of metals in contaminated farmland soils and spring wheat irrigated with Yellow River water in Baotou, China. *Bulletin of Environmental Contamination and Toxicology*, 94(2), 214–219.
15. Son C.T., Duc P.T., Anh N.M., Huyen N.T.A., Thien D.Q. 2019. Water quality assessment of some rivers in Gia Lam district by water quality index (WQI). *TNU Journal of Science and Technology*, 7, 133-140. (in Vietnam)
16. Tanriverdi Ç., Alp A., Demirkiran A.R., Üçkardeş F. 2010. Assessment of surface water quality of the Ceyhan River basin, Turkey. *Environmental Monitoring and Assessment*, 167(1–4), 175–184.
17. Thuy P.T.T., Viet N.V., Phuong N.K.L., Lee C.H. 2021. Water quality assessment using water quality index: a case of the Ray River, Vietnam, *TNU Journal of Science and Technology*, 226(06), 38–47.
18. Tuan D.D.A., Trung N.H., Thu B.A. 2019. Assessing quality of surface water for urban water supply source for Soc Trang City. *Can Tho University Journal of Science*, 55(4A), 61–70. (in Vietnam)
19. Uyen N.D.N., Liem N.D., Loi N.K. 2014. Assessing surface water quality in the La Nga river basin, Vietnam with SWAT model and water quality indicators. *Summary of National Conference on GIS 2014*. (in Vietnam)

20. Vietnam Environmental Protection Agency. 2015. National Technical Regulation on Surface Water Quality (QCVN 08-2015/BTNMT); Vietnam Environmental Protection Agency: Hanoi, Vietnam.
21. Wang Y., Wang P., Bai Y., Tian Z., Li J., Shao X., Mustavich L.F., Li B.L. 2013. Assessment of surface water quality via multivariate statistical techniques: A case study of the Songhua River Harbin region, China. *Journal of Hydro-Environment Research*, 7(1), 30–40.
22. Yang W., Zhao Y., Wang D., Wu H., Lin A., He L. 2020. Using principal components analysis and idw interpolation to determine spatial and temporal changes of Surfacewater quality of Xin’Anjiang river in huangshan, china. *International Journal of Environmental Research and Public Health*, 17(8), 1–14.
23. Zeinalzadeh K., Rezaei E. 2017. Determining spatial and temporal changes of surface water quality using principal component analysis. *Journal of Hydrology: Regional Studies*, 13(July), 1–10.